



HARVARD
Faculty of Arts and Sciences



TapeStation Training



INSTRUMENTS LOCATED IN NORTHWEST LABS B239

TapeStation Training Outline

1. TapeStation 4200
2. Power Cycling the Instrument
3. Reagents & Consumables
4. Preparing your Samples
5. Preparing the Instrument
6. Run Set-up and Start
7. Transferring Your Data
8. Completing Your Run
9. Analyzing Your Data



TapeStation 4200

- Run single samples/lanes
- Can add up to 7 additional tapes
- Tip box holds 112 tips
- Core has 2 instruments for shared use:
 - #1: Orange dot 
 - #2: Red dot 





HARVARD

Faculty of Arts and Sciences

Power Cycling the Instrument

Shutdown and Restarting Procedure

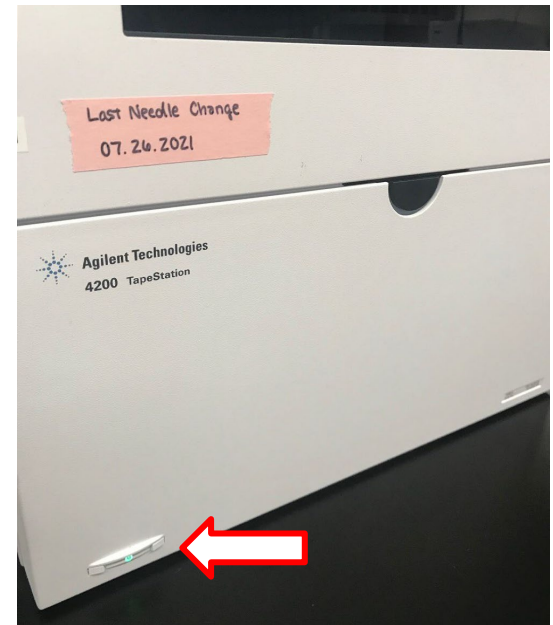
Ensure that the 4200 TapeStation system is shut down and restarted in the following order:

Shutdown:

1. Turn off the 4200 TapeStation instrument
2. Power down the laptop

Restart:

1. Powerup the laptop
2. Turn on the 4200 TapeStation instrument



Power Switch Location



Reagents & Consumables

BEFORE YOU START YOUR RUN

DNA

RNA

D1000
35 to 1000bp
1µl of sample



0.1 – 50ng/µl

LOD
0.1 ng/uL

HS D1000
35 to 1000bp
2µl of sample



10 – 1000pg/µl

LOD
5 pg/uL

D5000
100 to 5000bp
1µl of sample



0.1 – 50ng/µl

LOD
0.1 ng/uL

HS D5000
100 to 5000bp
2µl of sample



10 – 1000pg/µl

LOD
5 pg/uL

Genomic DNA
200 to 1000kbp
1µl of sample



10 – 100ng/µl

LOD
0.5 ng/uL

DNA Integrity Number

RNA
100 to 6000b
1µl of sample



25–500ng/µl

LOD
5 ng/µL

RNA Integrity Number equivalent (RIN[®])

HS RNA
100 to 6000b
2µl of sample



500–10,000pg/µl

LOD
100 pg/µL

Note: Only tapes sold by Bauer Core are shown, other assays available through Agilent Technologies

Modified from: https://www.agilent.com/cs/library/slidepresentation/public/Complete%20Success_Begins_with_Sample_Quality_Control.pdf



Order Tapes Through minilims

Home Add Page Configure Page Import Data Reports Admin History Help [Minilims Home]

Adding Reagent_Request

Cancel Save

* Name	REA10719
Supporting Data	<input type="text"/>
Submitter Name	Nicole_EI-Ali
Group	Bauer_Core
* Charge Type	Expense_Code
Expense Code 1	<input type="text"/> 100 ?
Expense Code 2	<input type="text"/> 0
Expense Code 3	<input type="text"/> 0
Expense Code 4	<input type="text"/> 0
Purchase Order Number	<input type="text"/>
Purchase Order File	<input type="button" value="Choose File"/> No file chosen
Category	Reagent
Reagent	<input type="text"/>
Quantity	<input type="text"/>
Status	NEW
Invoice Month	<input type="text"/> ?
Notes	<input type="text"/>
Supporting Data	<input type="button" value="Choose File"/> No file chosen

* = Required field



HARVARD

Faculty of Arts and Sciences

Pick up Tapes from the Bauer Core

**BAUER CORE AND
HCMS (mass spec)
SAMPLES DROP
OFF STATION**

For Bauer core samples, follow
protocol found on the freezer top.
For HCMS (small molecules mass
spec, proteomics) follow protocol
posted on the right

HCMS samples drop off

1. Do NOT use the clipboard. No sample tags
have to be attached. Please use your own labels or notebook
if you wish.
2. Make sure your samples are well labeled!
Use a box or bag, if possible with substance
number.
3. Chill between 4°C (night) or 16°C
(day) and keep your samples.
4. Arrive at the freezer at least 15 min
before you have dropped off your samples.

- If you prefer to store your samples in a
dry ice container, please use the dry ice
storage bags and arrange a time with your contact at
HCMS, so that we can arrange to receive
your samples.
- Samples placed in the morning will need to be kept
overnight. You must use the dry ice storage
bags for overnight storage. Do not use
bags for overnight storage. Do not use
bags for overnight storage.



HCMS
Sample Drop-off
Station



illumina
sample drop-off

-20°C

Submitting samples for SEQUENCING?
Please put samples in the Blue Bag
NOT on the shelves.
Thank you!
The Bauer Core Team
Questions?
Email us at baucer@cam.ac.uk

Submitting samples for LC?
Please put samples in the
NOT on the shelves.
Thank you!
The Bauer Core Team
Questions?
Email us at baucer@cam.ac.uk

Barcode Scanner -20°C

NO FOOD OR DRINK
SHOULD BE STORED
IN THIS REFRIGERATOR

495 ←

Barcode Scanner

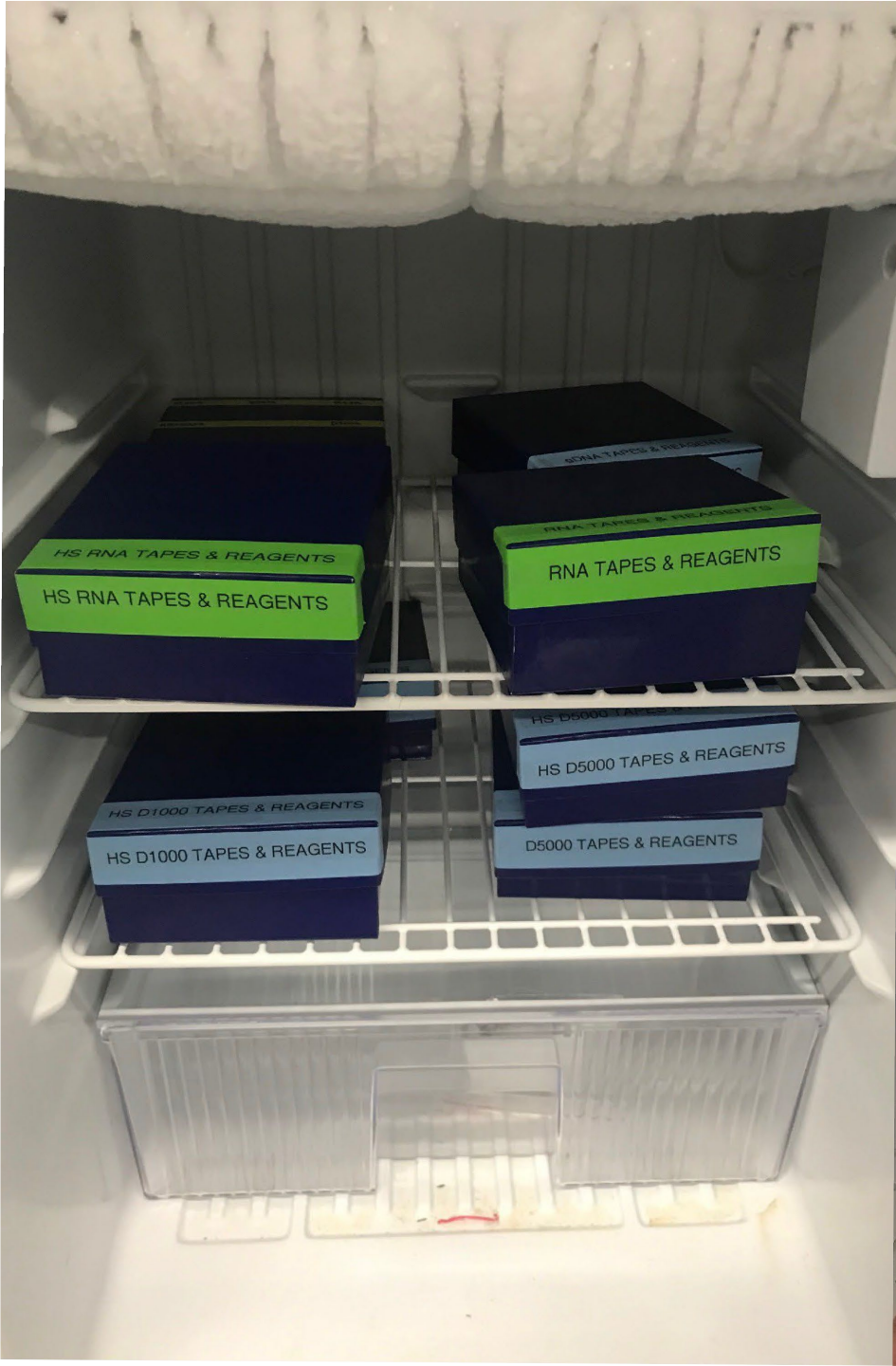




LARGE ONLY
NOT FOR USE IN THIS ROOM
BIOANALYZER AND TAPESTATION REAGENTS

Bioanalyzer
and
TapeStation
Reagents





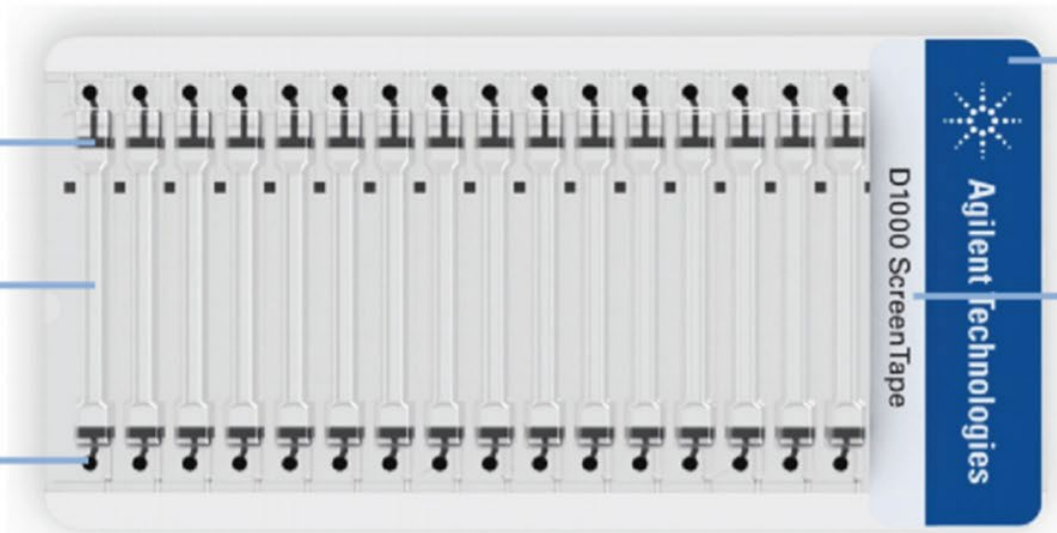
ONLY USE PARTIAL TAPES IN THE SAME INSTRUMENT YOU FIRST RUN THAT TAPE

Use an orange dot (TS #1) or a red dot (TS #2) to indicate where the tape was run.

Buffer chamber

Gel

Electrodes



Front

ScreenTape name

D1000 ScreenTape



Agilent Technologies

Ensure Tape has buffer in the chamber and tap lightly to remove any bubbles between electrodes



Back

Barcode

ScreenTape details

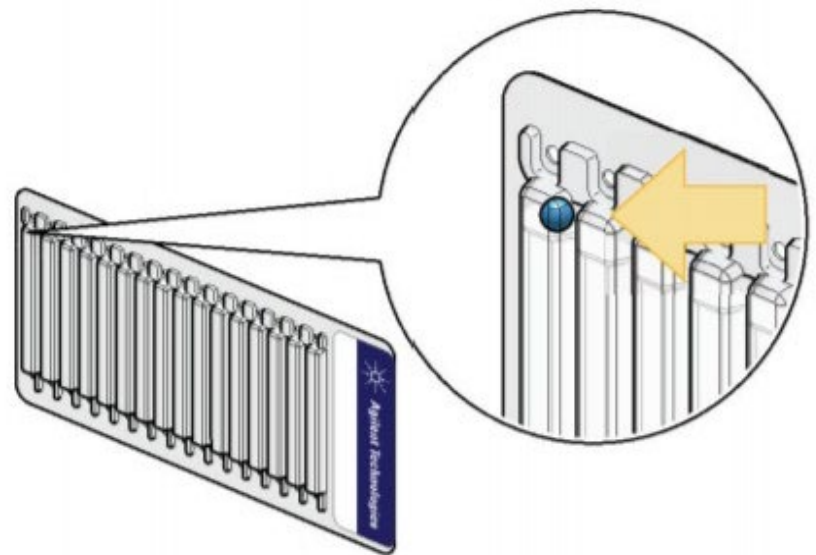
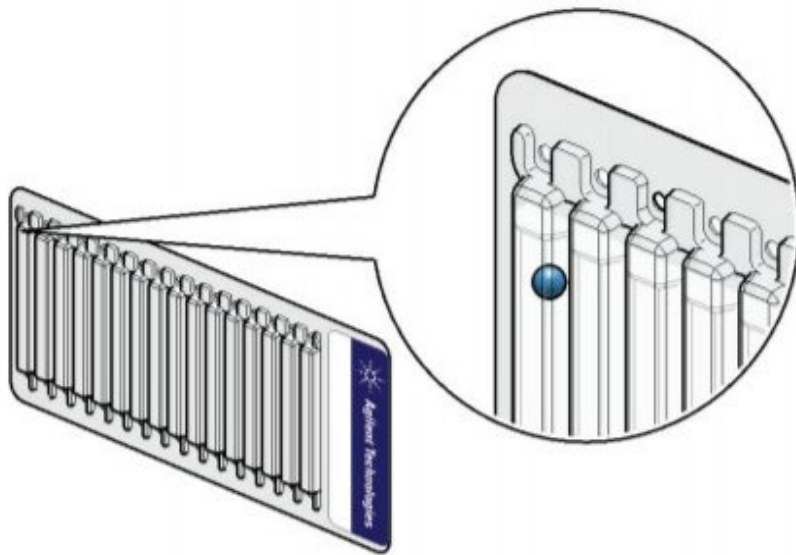
D1000 ScreenTape
EXP: 23 Mar 2037
ID: 01-S029-370923-06-000X445

Modified from: https://www.agilent.com/cs/library/usermanuals/public/4200-TapeStation_SystemManual.pdf



HARVARD
Faculty of Arts and Sciences

Check for Bubbles in Tape



Effect of Bubbles

Bubbles within the gel lane significantly affect results.

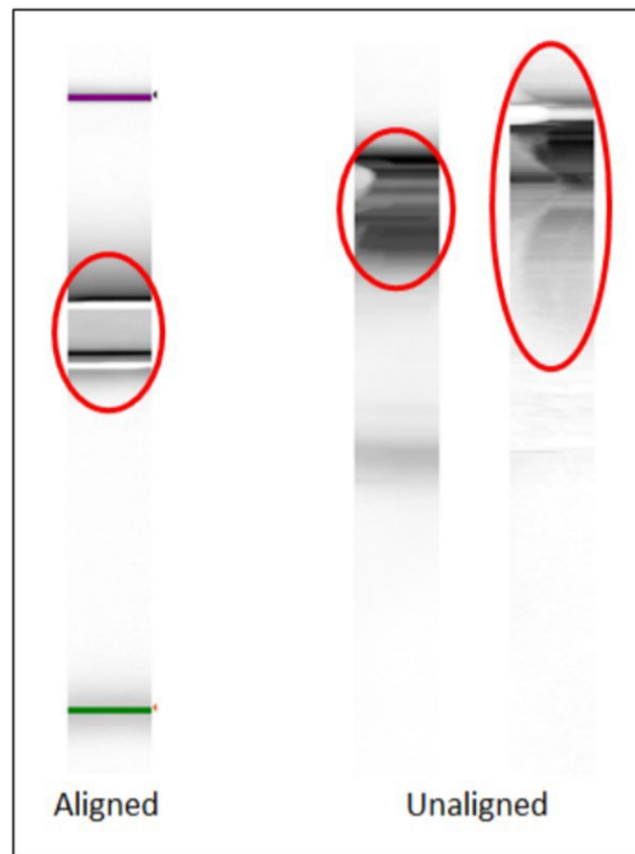
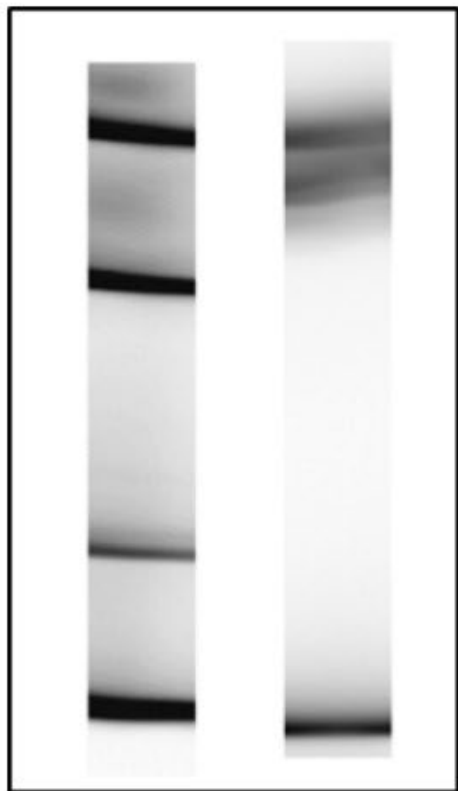


Figure 14 Effect of bubbles at the gel interface on TapeStation Analysis software results - Gel view/unaligned

Air bubbles present at the top of the buffer chamber are normal and acceptable.

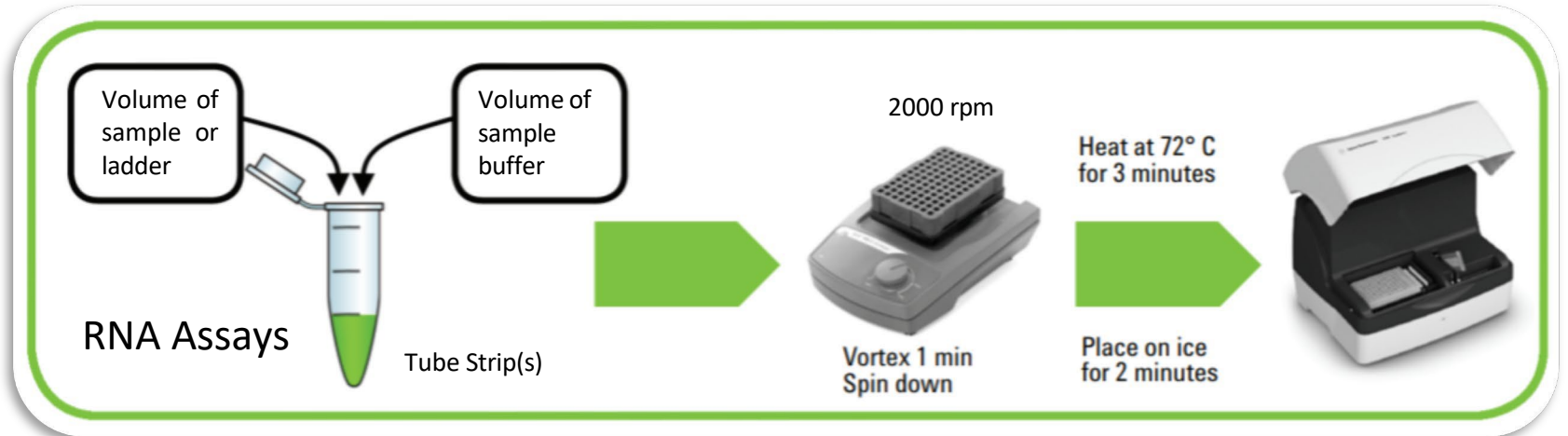
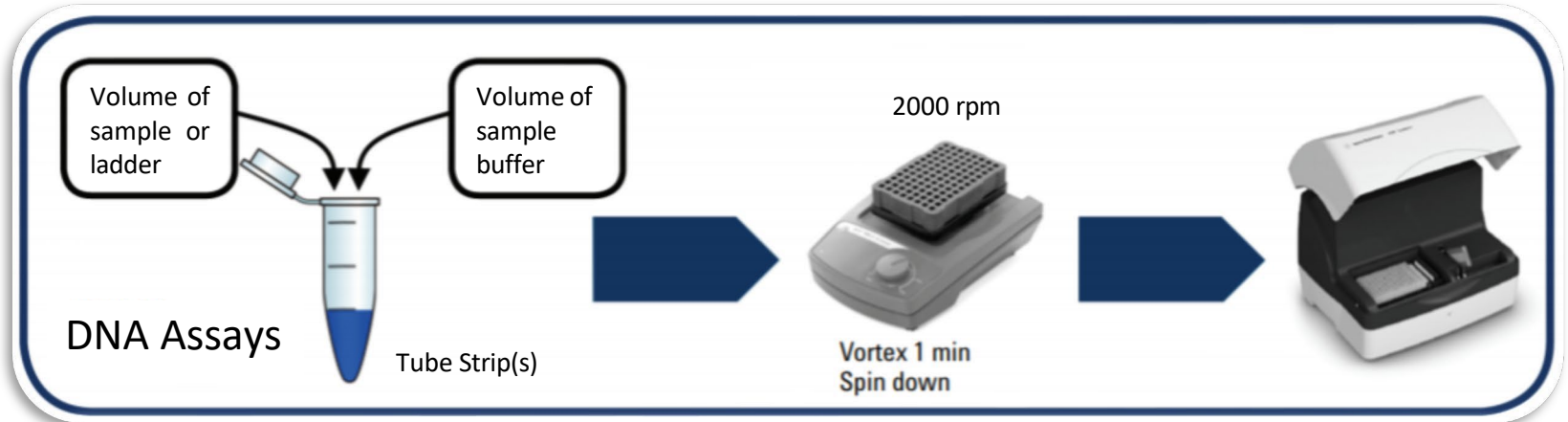


HARVARD

Faculty of Arts and Sciences

Prepare Your Samples

Protocols for DNA & RNA Assays





OPEN
FOR PLATE
SPRAYER
VWR

FUGE
VWR

VWR
VORTEX MIXER

70% Ethanol

Multi-Channel Pipette
VWR

Microplate Racks

SKA 3
VWR

White card

TAPESTATION PROTOCOLS

TAPESTATION 4200 CONSUMABLES

TAPESTATION: USER PLATE STORAGE
TAPESTATION: EXTRA TUBES
TAPESTATION: EXTRA CAPS

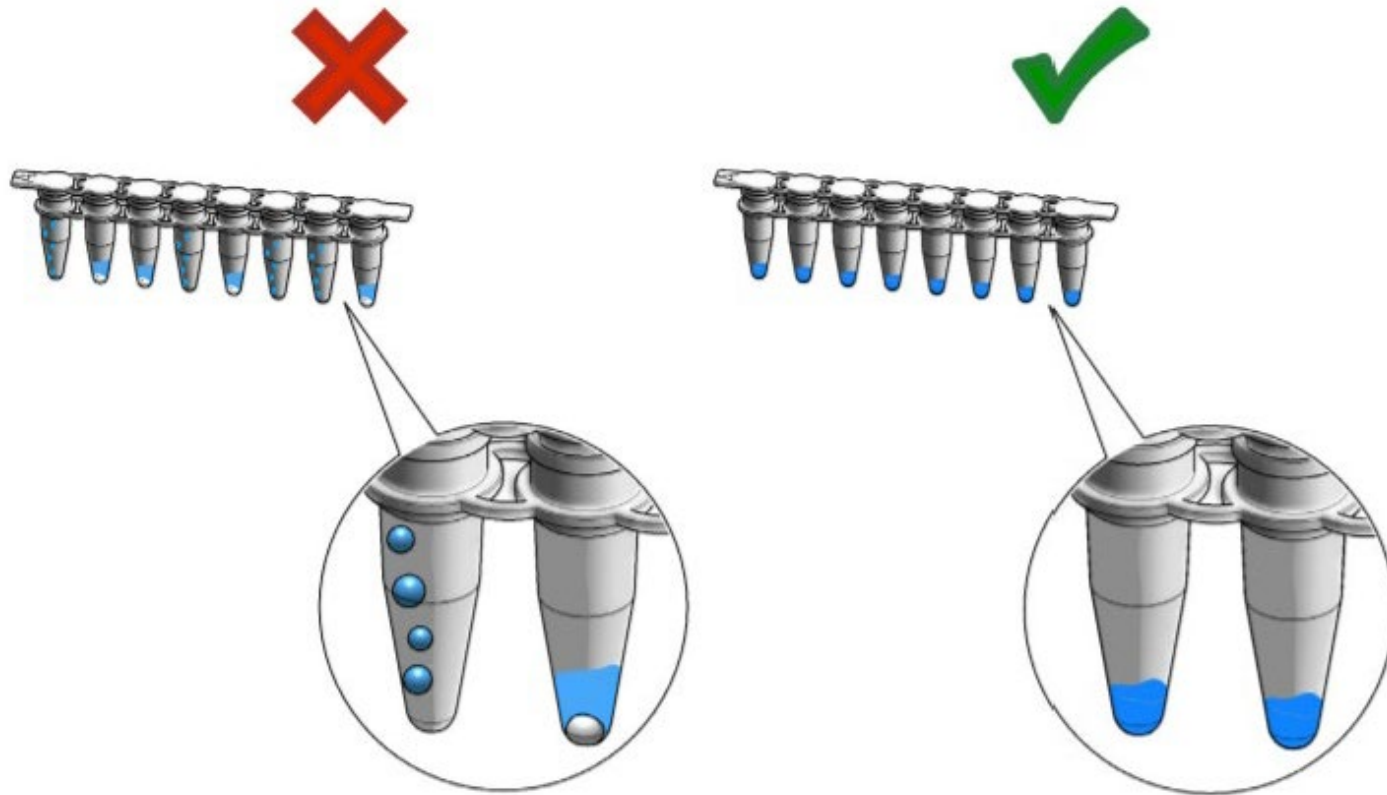
TAPESTATION: EXTRA TIPS
TAPESTATION: EXTRA PLATE SEALS

TAPESTATION: EXTRA PLATES

DO NOT CUT STRIP TUBES

Use the entire strip even for just one well

Centrifuge Samples



CAUTION

Improper or skipped centrifugation

Failure to spin down samples can cause empty or smeared lanes on the ScreenTape device as no or insufficient sample volume is transferred. Subsequently, no data or data of low quality are created.

→ Ensure that the sample liquid persists bubble free at the bottom of the sample tube or well.

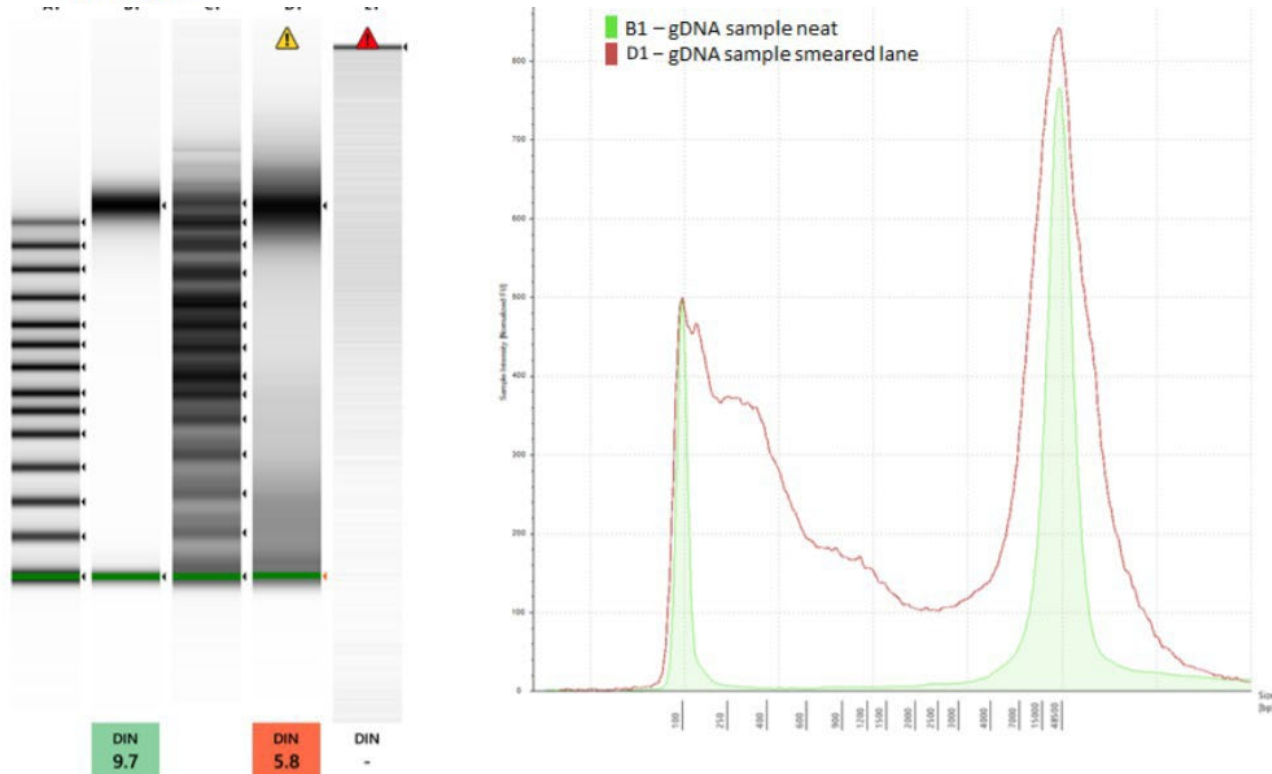


Figure 20 Example of a well separated Genomic DNA ladder and sample lane (A1 and B1) in comparison to a smeared Genomic DNA ladder and sample lane (C1 and D1) as well as a blank lane in the **Gel View** (Left) and **Electropherogram View** (Right) of the TapeStation Analysis software.



Setting User Preferences



1:10
Monday, August 16

Save files to <https://ricstore02.rc.fas.harvard.edu/> for temporary storage.
Please transfer out any files that you would like to save to a long-term storage location.
Any files older than 90 days will be deleted without notice.

Use Care: Before using the equipment, read the user manual.
WARRANTY: MAINTENANCE, and R&E. Operating with one of our Sales Reps.
Please check in with us to schedule a training.



IT IS SAFE TO POWER CYCLE THE COMPUTER AND INSTRUMENT
If either are turned off, please turn on and leave on.

ONLY USE PARTIAL TAPES THAT WERE RUN ON THIS MACHINE
Use a Yellow Dot when you save your tape to indicate it was used on this instrument.

DO NOT CUT STRIP TUBES
Use the entire strip, even for just one well.

Assay Type	Application	Configuration	Comments
Agilent 4200	Agilent 4200	Agilent 4200	Agilent 4200
Agilent 4200	Agilent 4200	Agilent 4200	Agilent 4200
Agilent 4200	Agilent 4200	Agilent 4200	Agilent 4200
Agilent 4200	Agilent 4200	Agilent 4200	Agilent 4200
Agilent 4200	Agilent 4200	Agilent 4200	Agilent 4200
Agilent 4200	Agilent 4200	Agilent 4200	Agilent 4200
Agilent 4200	Agilent 4200	Agilent 4200	Agilent 4200
Agilent 4200	Agilent 4200	Agilent 4200	Agilent 4200
Agilent 4200	Agilent 4200	Agilent 4200	Agilent 4200

Last Needle Change
07.26.2021

Agilent Technologies
4200 TapeStation

Any files older than 90 days will be deleted without notice.
Please transfer out any files that you would like to save to a long-term storage location.
If you have questions about how to use the equipment, please ask Claire (claire@ric.fas.harvard.edu).

- Recycle Bin
- TapeStation Analysis
- TapeStation Manuals
- TapeStation Controller
- TapeStation Quick Guides
- Tape Data
- Agilent Informat...
- KBelanger - Shortcut
- Microsoft Excel 2010
- Microsoft Outlook 2010
- Microsoft Word 2010



Windows taskbar with Cortana search bar, system tray icons, and the date/time display: 1:10 PM 8/16/2021.

Save files to <\\rcstore02.rc.fas.harvard.edu\data> for temporary storage.
Please transfer out any files that you would like to save to a long-term storage location.
Any files older than 90 days will be deleted without notice.

4200 TapeStation System

User **kbelanger**

Notes

Prefix

Reagent Lot #

ScreenTape Lot #

Required For Run

0 Tips

Please insert a ScreenTape device into TapeNest

	1	2	3	4	5	6	7	8	9	10	11	12
A	○	○	○	○	○	○	○	○	○	○	○	○
B	○	○	○	○	○	○	○	○	○	○	○	○
C	○	○	○	○	○	○	○	○	○	○	○	○
D	○	○	○	○	○	○	○	○	○	○	○	○
E	○	○	○	○	○	○	○	○	○	○	○	○
F	○	○	○	○	○	○	○	○	○	○	○	○
G	○	○	○	○	○	○	○	○	○	○	○	○
H	○	○	○	○	○	○	○	○	○	○	○	○

	1	2
A	○	○
B	○	○
C	○	○
D	○	○
E	○	○
F	○	○
G	○	○
H	○	○

Insert
ScreenTape
device

Well	Description
------	-------------

0 Samples selected

Column selection

✓ DEDAA01189 : Idle

❌ No ScreenTape device detected

Start

⊞ I'm Cortana. Ask me anything.



10:47 AM
8/12/2021

4200 TapeStation System

User kbelanger
Notes
Prefix
Reagent Lot # ScreenTape Lot #

Required For Run

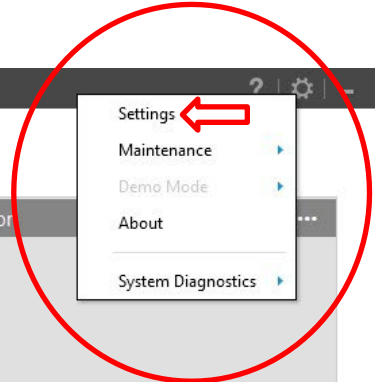
0 Tips
Please insert a ScreenTape device into TapeNest

	1	2	3	4	5	6	7	8	9	10	11	12
A	○	○	○	○	○	○	○	○	○	○	○	○
B	○	○	○	○	○	○	○	○	○	○	○	○
C	○	○	○	○	○	○	○	○	○	○	○	○
D	○	○	○	○	○	○	○	○	○	○	○	○
E	○	○	○	○	○	○	○	○	○	○	○	○
F	○	○	○	○	○	○	○	○	○	○	○	○
G	○	○	○	○	○	○	○	○	○	○	○	○
H	○	○	○	○	○	○	○	○	○	○	○	○

	1	2
A	○	○
B	○	○
C	○	○
D	○	○
E	○	○
F	○	○
G	○	○
H	○	○

Insert ScreenTape device

Well	Description
0 Samples selected	
Column selection	



✓ DEDAA01189 : Idle
No ScreenTape device detected

I'm Cortana. Ask me anything.

Start

10:48 AM 8/12/2021

4200 TapeStation System

User kbelanger
Notes
Prefix
Reagent Lot # ScreenTape Lot #

Required For Run

0 Tips
Please insert a ScreenTape device into TapeStation

	1	2	3	4	5	6	7	8	9	10	11	12
A	○	○	○	○	○	○	○	○	○	○	○	○
B	○	○	○	○	○	○	○	○	○	○	○	○
C	○	○	○	○	○	○	○	○	○	○	○	○
D	○	○	○	○	○	○	○	○	○	○	○	○
E	○	○	○	○	○	○	○	○	○	○	○	○
F	○	○	○	○	○	○	○	○	○	○	○	○
G	○	○	○	○	○	○	○	○	○	○	○	○
H	○	○	○	○	○	○	○	○	○	○	○	○

Insert ScreenTape device

Settings

ScreenTape Device Settings

Allow usage of expired ScreenTape device

Yes



RNA Assay Settings

Default mode for RNA assays

Eukaryotic

File Output Settings

Create data file names by combining

- Assay
- Instrument Serial
- Date
- Time Counter

Output Path:

Daily Subdirectory

... s:\kbelanger\Documents\Agilent\TapeStation Data\ ...
2021-08-12\PREFIX - 2021-08-12 - 10.48.41

✓ DEDAA01189 : Idle
No ScreenTape device detected

Agilent TapeStation Controller Software 4.1

4200 TapeStation System

User: kbelanger
Notes:
Prefix:
Reagent Lot #: ScreenTape Lot #:

Required For Run

0 Tips
Please insert a ScreenTape device into TapeStation

	1	2	3	4	5	6	7	8	9	10	11	12		1	2
A	○	○	○	○	○	○	○	○	○	○	○	○		○	○
B	○	○	○	○	○	○	○	○	○	○	○	○		○	○
C	○	○	○	○	○	○	○	○	○	○	○	○		○	○
D	○	○	○	○	○	○	○	○	○	○	○	○		○	○
E	○	○	○	○	○	○	○	○	○	○	○	○		○	○
F	○	○	○	○	○	○	○	○	○	○	○	○		○	○
G	○	○	○	○	○	○	○	○	○	○	○	○		○	○
H	○	○	○	○	○	○	○	○	○	○	○	○		○	○

Insert ScreenTape device

Settings

ScreenTape Device Settings

Allow usage of expired ScreenTape device
Yes

RNA Assay Settings

Default mode for RNA assays
Eukaryotic
Eukaryotic
Prokaryotic

Create data file names by combining

Assay
 Instrument Serial
 Date
 Time Counter

Output Path:
 Daily Subdirectory

... s:\kbelanger\Documents\Agilent\TapeStation Data\ ...
2021-08-12\PREFIX - 2021-08-12 - 10.48.41

DEDAA01189 : Idle
No ScreenTape device detected

10:49 AM 8/12/2021

Agilent TapeStation Controller Software 4.1

4200 TapeStation System

User: kbelanger
Notes:
Prefix:
Reagent Lot #: ScreenTape Lot #:

Required For Run

0 Tips
Please insert a ScreenTape device into TapeStation

	1	2	3	4	5	6	7	8	9	10	11	12
A												
B												
C												
D												
E												
F												
G												
H												

Insert ScreenTape device

Settings

ScreenTape Device Settings

Allow usage of expired ScreenTape device
Yes

RNA Assay Settings

Default mode for RNA assays
Eukaryotic

File Output Settings

Create data file names by combining

- Assay
- Instrument Serial
- Date
- Time Counter

Output Path:

- Daily Subdirectory

... s:\kbelanger\Documents\Agilent\TapeStation Data\ 2021-08-12\PREFIX - 2021-08-12 - 10.48.41 ...

DEDAA01189 : Idle
No ScreenTape device detected

I'm Cortana. Ask me anything.

10:48 AM 8/12/2021





HARVARD

Faculty of Arts and Sciences

Preparing the 4200 Instrument

4200 Instrument

4200TapeStation Instrument User Interface

- No mix & match between ScreenTape assays
- only one assay type per run
- No combination of 96 well plate and Tube strips
- System performs automatic upfront scan
 - # Loading tips
 - # ScreenTape devices in ScreenTape rack



4200 Instrument Image: modified from: https://www.agilent.com/cs/library/slidepresentation/public/Complete%20Success_Begins_with_Sample_Quality_Control.pdf

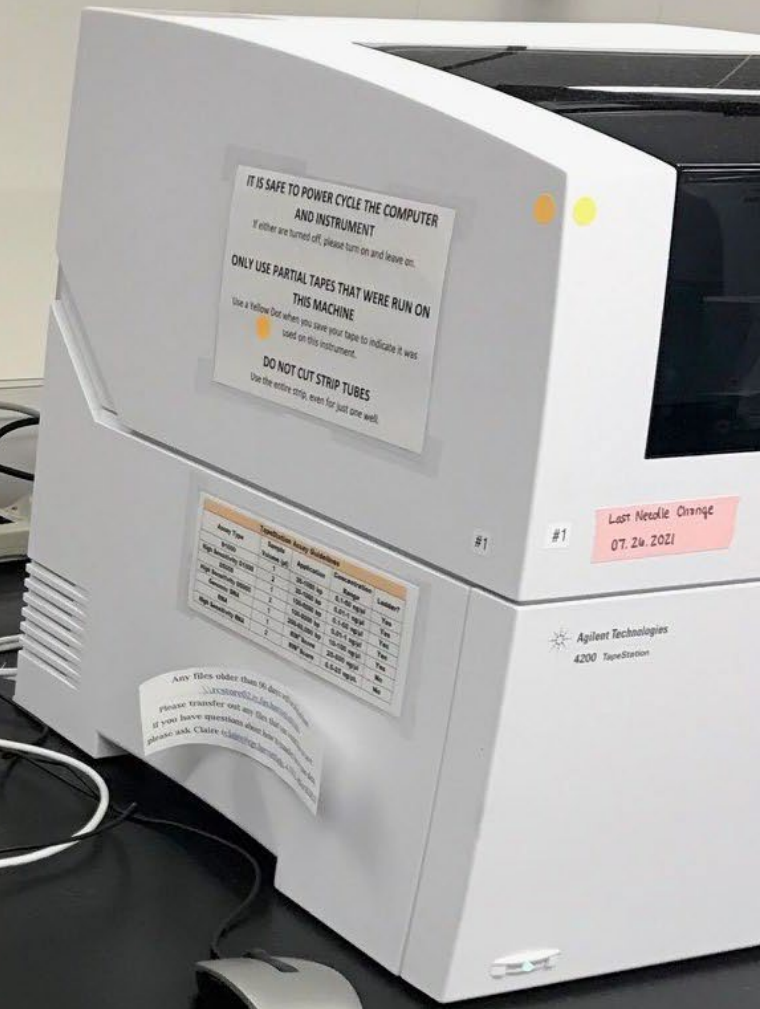




1:10
Monday, August 16

Save files to ricator02.ucsf.edu data for temporary storage.
Please transfer out any files that you would like to save to a long-term storage location.
Any files older than 90 days will be deleted without notice.

Dear Customer: Before using the capabilities of this product, please read the user manual and safety information. Please check to see you are using the correct software and hardware. Please check to see you are using the correct software and hardware.



IT IS SAFE TO POWER CYCLE THE COMPUTER AND INSTRUMENT
If either are turned off, please turn on and leave on.
ONLY USE PARTIAL TAPES THAT WERE RUN ON THIS MACHINE
Use a Yellow Dot when you save your tape to indicate it was used on this instrument.
DO NOT CUT STRIP TUBES
Use the entire strip, even for just one well.

Assay Type	Application	Configuration	Comments
Agilent 4200	Agilent 4200	Agilent 4200	Agilent 4200
Agilent 4200	Agilent 4200	Agilent 4200	Agilent 4200
Agilent 4200	Agilent 4200	Agilent 4200	Agilent 4200
Agilent 4200	Agilent 4200	Agilent 4200	Agilent 4200
Agilent 4200	Agilent 4200	Agilent 4200	Agilent 4200
Agilent 4200	Agilent 4200	Agilent 4200	Agilent 4200
Agilent 4200	Agilent 4200	Agilent 4200	Agilent 4200

Last Needle Change
07.26.2021

Agilent Technologies
4200 TapeStation

Any files older than 90 days will be deleted without notice.
Please transfer out any files that you would like to save to a long-term storage location.
If you have questions about how to use this product, please ask Claire at claire@ricator02.ucsf.edu.



- Recycle Bin
- TapeStation Analysis
- TapeStation Manuals
- TapeStation Controller
- TapeStation Quick Guides
- Tape Data
- Agilent Informat...
- KBelanger - Shortcut
- Microsoft Excel 2010
- Microsoft Outlook 2010
- Microsoft Word 2010



Windows taskbar with Cortana search bar, system tray icons, and the date/time display: 1:10 PM 8/16/2021.

Save files to <\\rcstore02.rc.fas.harvard.edu\data> for temporary storage.
Please transfer out any files that you would like to save to a long-term storage location.
Any files older than 90 days will be deleted without notice.

4200 TapeStation System

User **kbelanger**
Notes
Prefix
Reagent Lot # ScreenTape Lot #

Required For Run

0 Tips
Please insert a ScreenTape device into TapeNest

	1	2	3	4	5	6	7	8	9	10	11	12
A	○	○	○	○	○	○	○	○	○	○	○	○
B	○	○	○	○	○	○	○	○	○	○	○	○
C	○	○	○	○	○	○	○	○	○	○	○	○
D	○	○	○	○	○	○	○	○	○	○	○	○
E	○	○	○	○	○	○	○	○	○	○	○	○
F	○	○	○	○	○	○	○	○	○	○	○	○
G	○	○	○	○	○	○	○	○	○	○	○	○
H	○	○	○	○	○	○	○	○	○	○	○	○

	1	2
A	○	○
B	○	○
C	○	○
D	○	○
E	○	○
F	○	○
G	○	○
H	○	○

Insert
ScreenTape
device

Well	Description	...


0 Samples selected Column selection

✓ DEDAA01189 : Idle
❌ No ScreenTape device detected

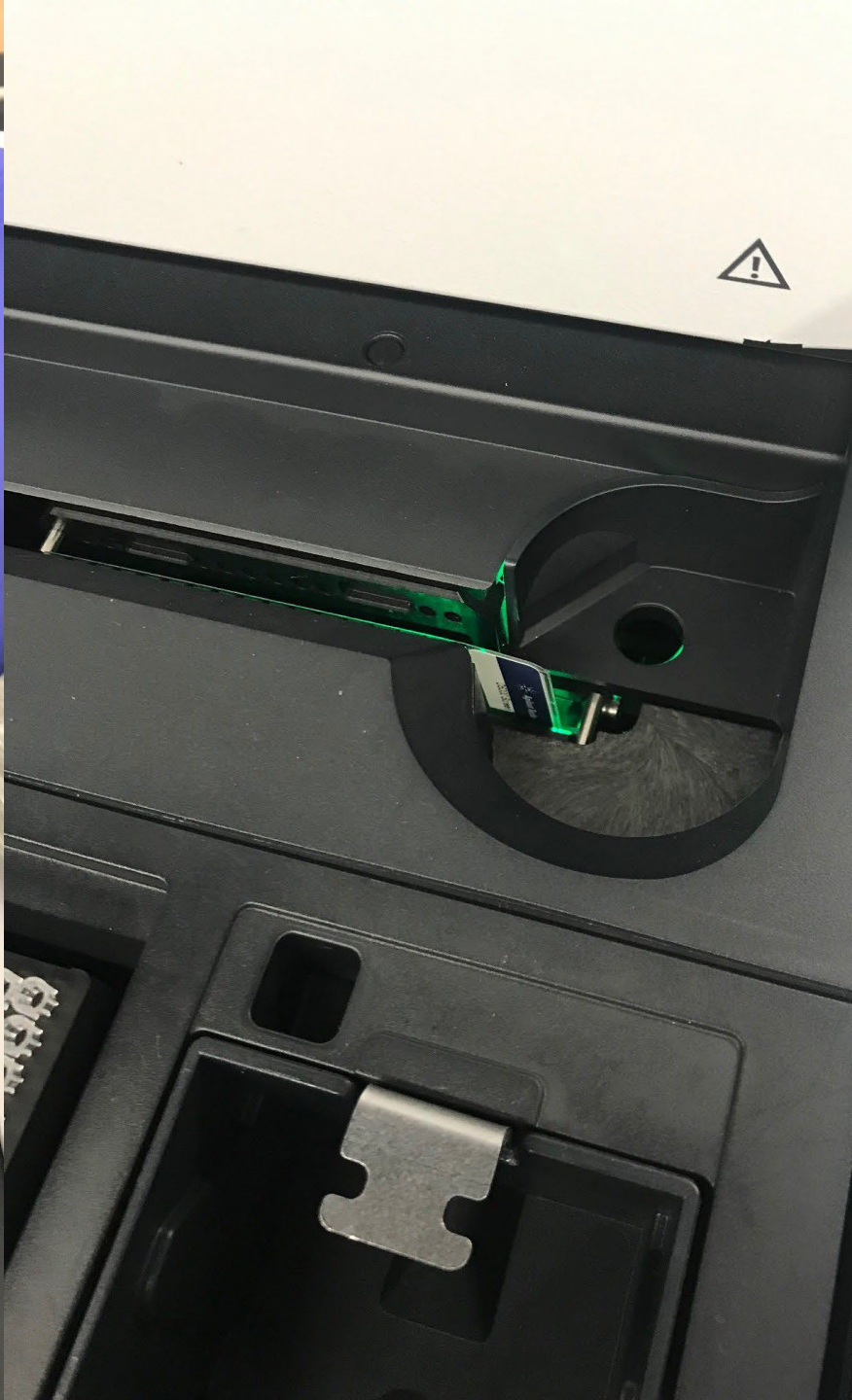
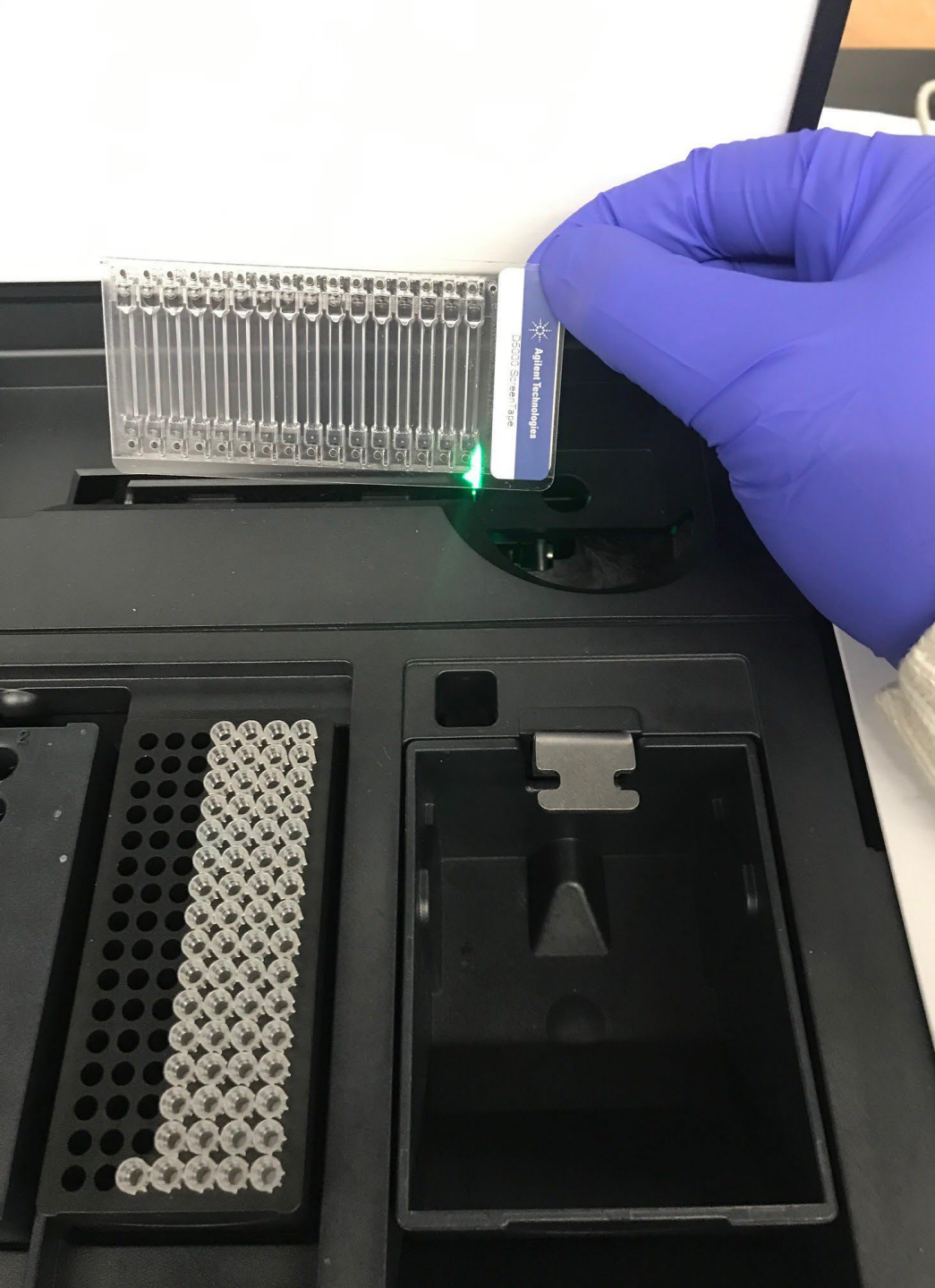
Start

Last Needle Change
07.26.2021



 Agilent Technologies
4200 TapeStation







HARVARD

Faculty of Arts and Sciences

Set-up & Start the Run

4200 TapeStation System

User kbelanger

Notes

Prefix

Reagent Lot #

ScreenTape Lot #

Required For Run

17 Tips

1 additional ScreenTape device in Rack

L: 1µl Ladder + 10µl Sample Buffer

	1	2	3	4	5	6	7	8	9	10	11	12
A	○	○	○	○	○	○	○	○	○	○	○	○
B	○	○	○	○	○	○	○	○	○	○	○	○
C	○	○	○	○	○	○	○	○	○	○	○	○
D	○	○	○	○	○	○	○	○	○	○	○	○
E	○	○	○	○	○	○	○	○	○	○	○	○
F	○	○	○	○	○	○	○	○	○	○	○	○
G	○	○	○	○	○	○	○	○	○	○	○	○
H	○	○	○	○	○	○	○	○	○	○	○	○

	1	2
A	L	●
B	●	●
C	●	●
D	●	●
E	●	●
F	●	●
G	●	●
H	●	●

Agilent Technologies

D5000 ScreenTape

Well	Description
L	Ladder
B1	
C1	
D1	
E1	
F1	
G1	
H1	
A2	
B2	
C2	
D2	
E2	
F2	
G2	
H2	

16 Samples selected

Instrument lid is open. Plea

4200 TapeStation System

User kbelanger

Notes

Prefix

Reagent Lot #

ScreenTape Lot #

Required For Run

6 Columns of 16 Tips

5 additional ScreenTape devices in Rack

L: 2µl Ladder + 20µl Sample Buffer

Well	Description
L	Ladder
A1	
B1	
C1	
D1	
E1	
F1	
G1	
H1	
A2	
B2	
C2	
D2	
E2	
F2	
G2	
H2	
A3	
B3	
C3	
D3	

81 Samples selected Column selection

✓ DEDAA01189 : Idle
⚠ D5000 ScreenTape : Expired 01-Dec-2020

⚠ Instrument lid is open. Please close to continue

Save files to [\\rcstore02.rc.fas.harvard.edu\data](https://rcstore02.rc.fas.harvard.edu/data) for temporary storage.
Please transfer out any files that you would like to save to a long-term storage location.
Any files older than 90 days will be deleted without notice.

Well	Description	...
L	Ladder	
B1		
C1		
D1		
E1		
F1		
G1		
H1		
A2		
B2		
C2		
D2		
E2		
F2		
G2		
H2		

- Import
- Export
- Copy Selected
- Paste
- Clear Descriptions

16 Samples selected

Columns selected

Instrument lid is open. Please close to continue

Start

	A	B	C
1	A1	REA12345	c1
2	B1	REA12345	c2
3	C1	REA12345	c3
4	D1	REA12345	c4
5	E1	REA12345	c5
6	F1	REA12345	c6
7	G1	REA12345	c7
8	H1	REA12345	c8
9	A2	REA12345	r1
10	B2	REA12345	r2
11	C2	REA12345	r3
12	D2	REA12345	r4
13	E2	REA12345	r5
14	F2	REA12345	r6
15	G2	REA12345	r7
16	H2	REA12345	r8
17	A3		
18	B3		
19	C3		
20	D3		
21	E3		
22	F3		
23	G3		
24	H3		
25	A4		

System

Required For Run

6 Columns of 16 Tips

5 additional ScreenTape devices in Rack

L: 2 μ l Ladder + 20 μ l Sample Buffer

ScreenTape Lot #

Well	Description
L	Ladder
A1	
B1	
C1	
D1	
E1	
F1	
G1	



Before the run, please

- Empty the tip and ScreenTape waste
- Remove tube strip caps

Proceed

Cancel

H2	
A3	
B3	
C3	
D3	
E3	
F3	
G3	
H3	

81 Samples selected

expired 01-Dec-2020

ask me anything.



for harvard.edu\data for temporary storage,
long-term storage loca

File Home Comparison

View Display

Electropherogram Region Aligned Scale to Sample

Gel Snapshot Contrast Show All Lanes EPG Snapshot Reset Zoom

Insert Restore Hide Ladders Detection Settings Restore Default Settings Edit Peaks Region Settings

Gel EPG Ladder Analysis

Data Analysis

Files

D1000-Plate-96.D1000

Plate Selector

Sample Descriptions

L1: Ladder

A1: frag. lambda DNA
 B1: frag. lambda DNA 1:1
 C1: frag. lambda DNA 1:2
 D1: frag. lambda DNA 1:4
 E1: frag. lambda DNA 1:8
 F1: frag. lambda DNA 1:16
 G1: frag. lambda DNA 1:32
 H1: DNA ladder 2

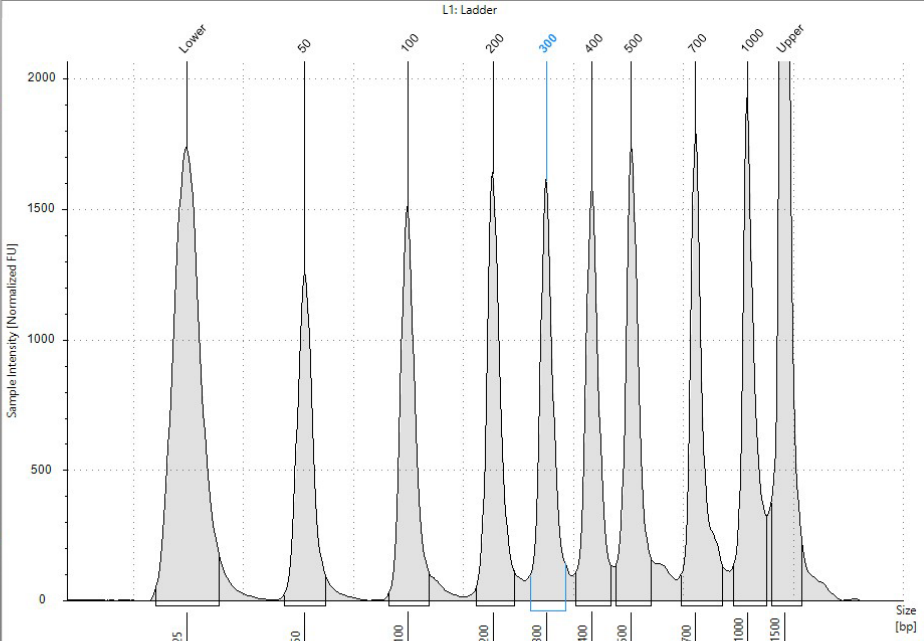
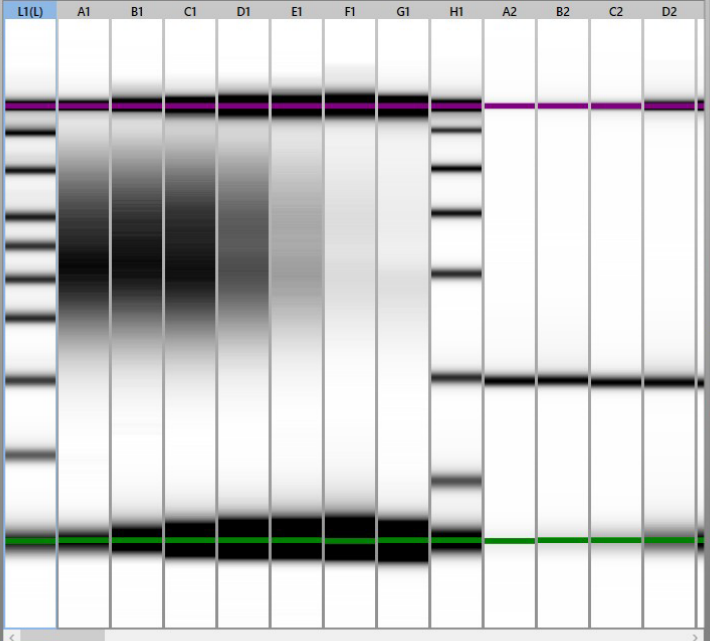
A2: 100bp fragment
 B2: 100bp fragment 1:1
 C2: 100bp fragment 1:2
 D2: 100bp fragment 1:4
 E2: 100bp fragment 1:8
 F2: 100bp fragment 1:16
 G2: 100bp fragment 1:32

L2: Ladder
 H2: TE buffer

A3: 750bp fragment
 B3: 750bp fragment 1:1
 C3: 750bp fragment 1:2
 D3: 750bp fragment 1:4
 E3: 750bp fragment 1:8
 F3: 750bp fragment 1:16
 G3: 750bp fragment 1:32

H3: DNA ladder 2
 A4: DNA library
 B4: DNA library 1:1
 C4: DNA library 1:2
 D4: DNA library 1:4
 E4: DNA library 1:8
 F4: DNA library 1:16

L3: Ladder
 G4: DNA library 1:32
 H4: TE buffer



Peak Table Sample Table

Well	Conc. (ng/μl)	Sample Description	Alert	Observations
L1	23.1	Ladder		Ladder
A1	9.36	frag. lambda DNA		
B1	3.12	frag. lambda DNA 1:1		
C1	0.985	frag. lambda DNA 1:2		
D1	1.50	frag. lambda DNA 1:4		
E1	0.232	frag. lambda DNA 1:8		
F1	0.144	frag. lambda DNA 1:16		



HARVARD

Faculty of Arts and Sciences

Transferring Your Data

\\rcstore02.rc.fas.harvard.edu\data

File Home Share View

data

\\rcstore02.rc.fas.harvard.edu\data


Name	Date modified
giumbrosu	10/17/2020
gmaldonado	8/5/2020
Hoekstra lab	8/25/2020
hperkinsCA	9/25/2020
Hua Wang	7/12/2020
InbarMaayan	9/25/2020
jbarrere	9/25/2020
jing12167.V2	2/19/2019
JingjingGONG	9/2/2020 5:00
jnelson	7/1/2020 3:50
Kahn Lab	9/25/2020 2:00



HARVARD

Faculty of Arts and Sciences


Sign Out of the Computer


 Kristina Belanger


Life at a glance

Change account settings

Lock

Sign out 

 Get Started


 Sway

 Notepad >

 Maps

 File Explorer >

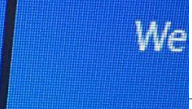
 Settings

 Power

 All apps



Calendar



Mail



Microsoft Edge



Photos



Weather



Phone Compa...



Store



Skype video





HARVARD

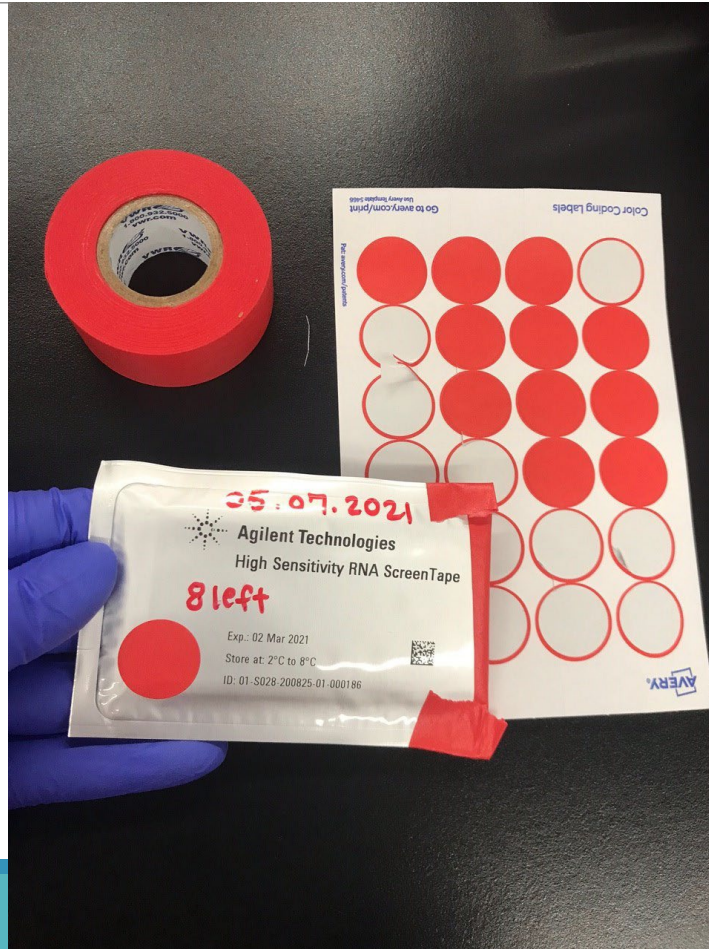
Faculty of Arts and Sciences

Return Reagents and Prepare Tape for Storage

4200 #1 : Orange Dot ●



4200 #2 : Red Dot ●



SANYO

LAB USE ONLY

NOT FOR USE WITH ITEMS
MEANT FOR
HUMAN CONSUMPTION

**Bioanalyzer
and
TapeStation
Reagents**

HS RNA TAPES & REAGENTS

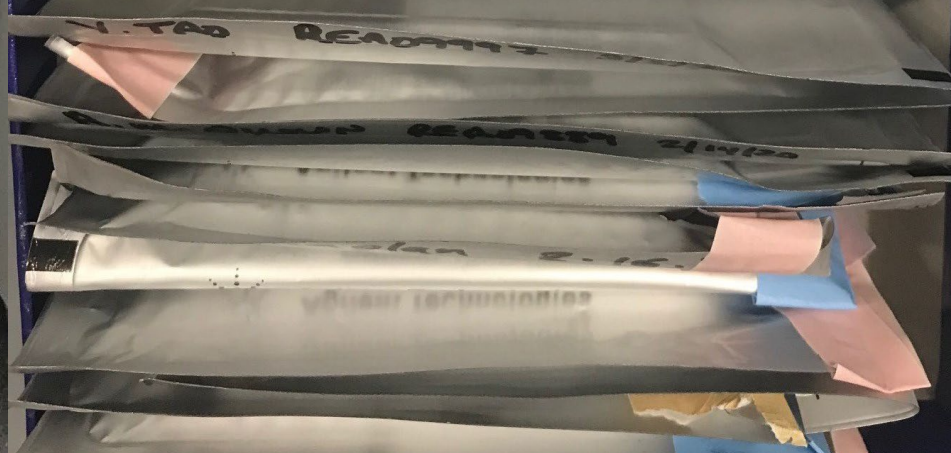
RNA TAPES & REAGENTS

HS D1000 TAPES & REAGENTS

HS D5000 TAPES & REAGENTS

D5000 TAPES & REAGENTS

**TAPESTATION
HSD1000 REAGENTS**





HARVARD

Faculty of Arts and Sciences

Questions?

References

https://www.agilent.com/cs/library/usermanuals/public/4200-TapeStation_SystemManual.pdf



HARVARD

Faculty of Arts and Sciences